

ARE THERE GERMINATION PATTERNS FOR CERRADO SPECIES?

M. A. Ranal

Biology Institute, Federal University of Uberlandia, Brazil,

D. G. Santana

Agronomy Institute, Federal University of Uberlandia, Brazil, and

I. Schiavini

Biology Institute, Federal University of Uberlandia, Brazil

Keywords: savanna, pioneer species, early secondary species, late secondary species, climax species, germinability, seedling emergence, dormancy, anhydrobiotic, desiccation tolerance, desiccation sensitivity, recalcitrant seeds.

Contents

1. Introduction
 2. Climatic Seasonality Determining the Rhythm of Reproduction Events
 3. Within and Between-Species Variation
 4. Seed Germination and Seedling Emergence Patterns for Cerrado Species
- Acknowledgments
Glossary
Bibliography
Biographical Sketches

Summary

Fragmentation and degradation of the cerrado Biome has stimulated the researchers to ask some questions. Are the species of the remaining original areas able to produce viable and vigorous seeds? Are the seeds produced by these plants able to germinate according to their natural rhythm, associated with the climatic seasonality of the region? Are there germination and emergence seedling patterns for these species? Trying to answer these questions, 49 tree species belonging to 20 families, 10 pioneers, 18 early secondary, 15 late secondary, and six without classification because they occur in savanna formations were studied in relation to the germination and seedling emergence processes. At the end of the dry season and during the first months of the wet season, seeds of the anemochorous species predominate in the environment and during the wet season several zoochorous species disperse their seeds. About 113 000 seeds from individuals occurring in gallery, deciduous, and semi-deciduous forests of the Araguari River Valley, Minas Gerais, Brazil were studied. Seeds with water content from 10 to 19.9% were the dominant class, most of them anhydrobiotic seeds. Near 24% of the species presented seeds with water content above 50%, most of them non-anhydrobiotic seeds. About 67% of the studied species have seeds with some type of dormancy, predominantly mechanical and relative dormancy. The mean germination or emergence time ranged from 1-4 to 201-231 days. Most of the studied species presented seeds with high quality, with more than 80% of germinability or seedling emergence. A few

species presented seeds with the germination and emergence processes synchronized, such as *Inga laurina*, *I. sessilis*, and *Tapirira guianensis*. Asynchrony was the predominant characteristic due to the dormancy of seeds and the time from the first to the last germination ranged from 1 (*Inga laurina* seeds) to 476 days (*Trema micrantha* seeds). The germination and emergence patterns are associated with dormancy or non-dormancy condition, independent of the fruiting period and about 85.4% of the studied species have seeds germinating in synchrony with the water rhythm of the cerrado Biome.

1. Introduction

The cerrado *sensu lato* is the second largest Brazilian ecoregion, with about 2 000 000 km² that represent 23% of the area of Brazil. This ecosystem is one of the most threatened on Earth and was included in the biodiversity hotspots list of Conservation International (2005) due to it having the highest plant diversity of all tropical savanna regions (6429 vascular species as at 1998, and nearly 12 000 in more recent floristic surveys), high level of endemism (about 44% for vascular plants) and, unfortunately, being subject to fragmentation and degradation due to urbanization and agricultural expansion (3% per year). The original and the actual green area of this biome are presented in Figures 1 and 2. About 20% of this area remains in a natural or little disturbed condition and by 1998, less than 1.5% was protected in conservation areas. Currently, 2.61% of the cerrado region is included in conservation areas, 1.75% in areas of sustainable use, and 0.04 in Private Reserves (RPPN - Reserva Particular do Patrimônio Natural).



Figure 1. Original green area of the Brazilian cerrado biome.

About 57% of the original green area of the Brazilian cerrado biome has been destroyed and the remaining areas are seriously threatened (Figure 2).

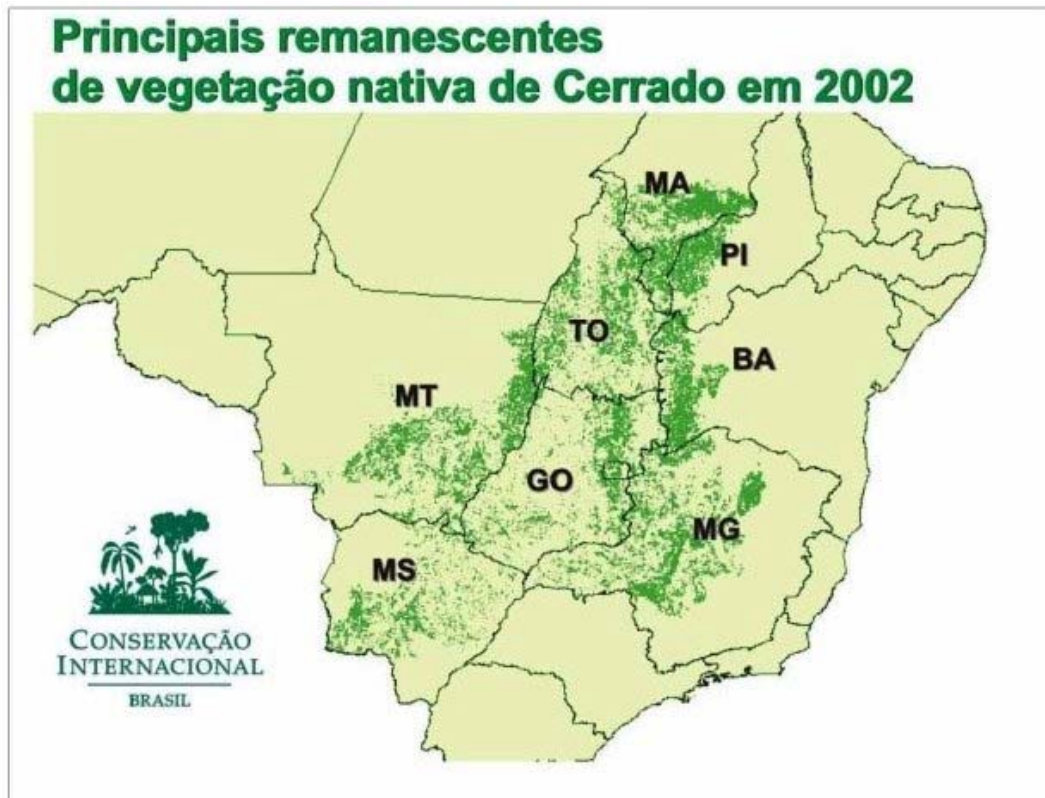


Figure 2. Main native vegetation remnants of the Brazilian cerrado biome in 2002.

There are eight main hydrographic basins in Brazil, and the upper sources of six of them are in the cerrado region, including the Amazonian basin with Xingu, Madeira, and Trombetas rivers; Tocantins basin with Araguaia and Tocantins rivers; North/Northeastern Atlântico basin with Parnaíba and Itapecuru rivers; São Francisco basin with São Francisco, Pará, Paraopeba, das Velhas, Jequitaí, Paracatu, Urucuia, Carinhanha, Corrente, and Grande rivers; East Atlântico basin with Pardo and Jequitinhonha rivers, and finally the Paraná basin with Parnaíba, Grande, Sucuriú, Verde, Pardo, Cuiabá, São Lourenço, Taquari, Aquidauana rivers among others (Figure 3).

The cerrado is therefore essential for water supply to a very large area and it represents a very important ecological corridor that needs to be protected to preserve its water resources, animal and plant biodiversity. The local population need a systemic vision to make the practice of its sustainable use possible.

The cerrado region includes several different physiognomic vegetation forms:

- Mesophytic forests (semi-deciduous, deciduous and gallery forests);
- Dystrophic cerradão (dense cerrado with almost closed woodland and sparse or absent herbaceous layer);
- Mesotrophic cerradão (dense cerrado, with almost closed woodland with higher soil fertility than the dystrophic cerradão);
- Dense cerrado (with plant density less than the above),

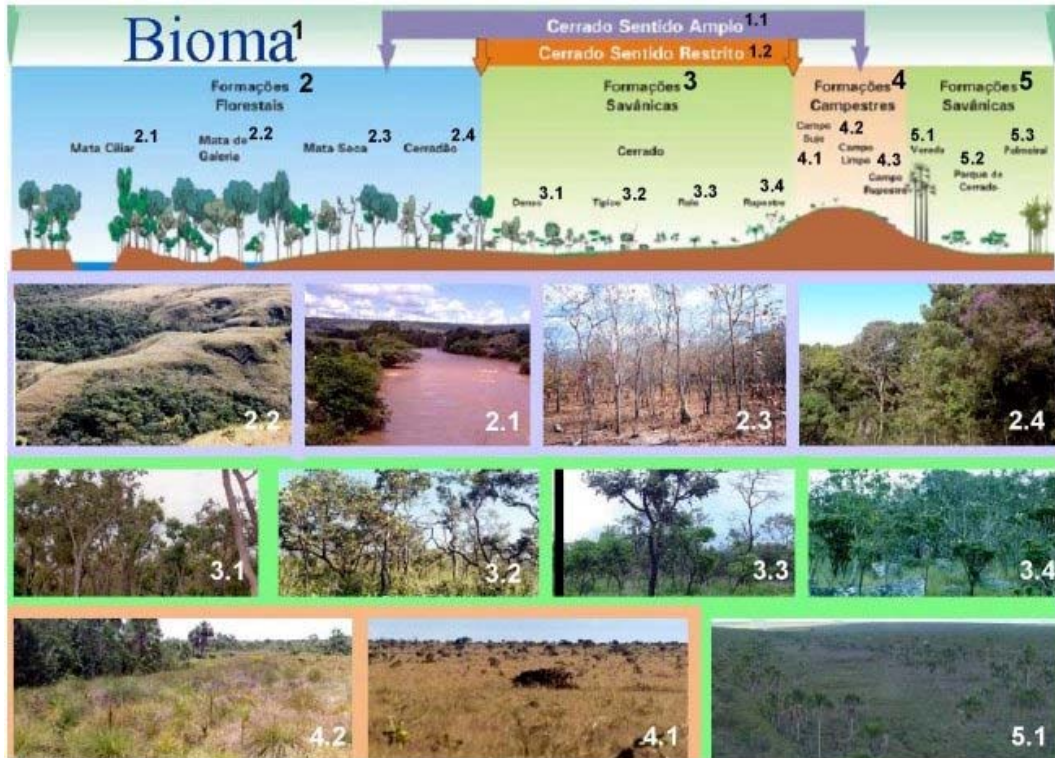


Figure 4. Vegetation profile typical of the Brazilian cerrado biome. 1. Biome; 1.1. Cerrado *sensu lato*, 1.2. Cerrado *sensu stricto*; 2. Forest formation, 2.1. Riparian forest, 2.2. Gallery forest, 2.3. Dry forest, 2.4. Cerradão; 3. Savanna formation, 3.1. Dense cerrado, 3.2. Typical cerrado, 3.3. Sparse cerrado, 3.4. Rocky outcrops (cerrado rupestre); 4. Grassland formation, 4.1. Dirty field or shrubby grassland, 4.2. Open grassland, 4.3. Rocky grasslands; 5. Savanna formation, 5.1. Palm swamp, 5.2. Cerrado Parkland, 5.3. Palm tree formation.

TO ACCESS ALL THE 54 PAGES OF THIS CHAPTER,
 Visit: <http://www.eolss.net/Eolss-sampleAllChapter.aspx>

Bibliography

Ab'Saber A.N. (1981). Domínios morfoclimáticos atuais e quaternários na região dos cerrados. *Craton & Intracraton* 14, 1-39. [The author, one of the principal Brazilian researchers that study climatic events, discusses the climatic evolution in the Cerrado region.]

Aguiar L.M.S., Machado R.B. and Marinho-Filho J. (2004). A diversidade biológica do cerrado.

Cerrado: Ecologia e Caracterização (ed. Aguiar L.M.S. and Camargo A.J.A.), 17-40. Brasília: Embrapa Informação Tecnológica. [The biodiversity and the conservation of the Cerrado Biome are discussed.]

Barroso G.M., Morim M.P., Peixoto A.L. and Ichaso C.L.F. (1999). *Frutos e Sementes: Morfologia Aplicada à Sistemática de Dicotiledôneas*, 443 pp. Viçosa: Editora da Universidade de Viçosa. [This book presents the morphological characterization of fruits and seeds with keys for identification of families and genus.]

Baskin C.C. and Baskin J.M. (1998). *Seeds: Ecology, Biogeography, and Evolution of Dormancy and Germination*, 666 pp. San Diego: Academic Press. [This is a higher bibliography survey about seeds, since their formation until the germination, including abiotic and biotic aspects associated with the physiological expression of the germination process and their determinant effects related to adaptation, evolution and geographic distribution of the species.]

Bawa K.S. (1974). Breeding systems of tree species of a lowland tropical community. *Evolution* 28, 85-92. [The breeding systems of arboreous species of tropical communities as *Hymenaea courbaril* are discussed.]

Brasil (1998). Ministério do Meio Ambiente, dos Recursos Hídricos e da Amazônia Legal. *Primeiro Relatório Nacional para a Conservação sobre Diversidade Biológica*. 283pp. Brasil, Brasília: Ministério do Meio Ambiente, dos Recursos Hídricos e da Amazônia Legal. [National rules for the biodiversity conservation.]

Buckeridge M.S., Santos H.P., Tiné M.A. and Aidar M.P.M. (2004). Mobilização de Reservas. *Germinação: do Básico ao Aplicado* (ed. Ferreira A.G. and Borghetti F.), 163-185. Porto Alegre: Artmed Editora. [This chapter presents concise biochemistry information about the use of the reserves by the seeds during the germination process.]

Busch J.W. (2005). The evolution of self-compatibility in geographically peripheral populations of *Leavenworthia alabamica* (Brassicaceae). *American Journal of Botany* 92, 1503-1512. [This paper discusses the evolution of one type of breeding system in one cabbage species.]

Carvalho D.A. and Oliveira P.E. (2003). Biologia Reprodutiva e Polinização de *Senna sylvestris* (Vell.) H.S. Irwin & Barneby (Leguminosae, Caesalpinoideae). *Revista Brasileira de Botânica* 26, 319-328. [The flower morphology and breeding system of this species were studied in the Panga Ecological Station, Uberlândia, Minas Gerais, Brazil, an important and well preserved fragment of the Cerrado Biome.]

Conservation International. (2000). Biodiversity hotspots. Hotspots: Earth's biologically richest and most endangered terrestrial ecoregions. *Nature* 403, 24 February. [An important reference for the localization of threatened areas of the Planet.]

Dias H.C.T. (2005). Fenologia de quatro espécies arbóreas e variação temporal e espacial da produção de serrapilheira em área de floresta estacional semidecídua em Lavras, MG. *Revista Cerne* 11(suplemento), 6-8. [Information about the phenological events of four tree species, including *Copaifera langsdorffii*.]

Felfili J.M. and Silva Jr. M.C. (2005). Diversidade alfa e beta no Cerrado *sensu stricto*, Distrito Federal, Goiás, Minas Gerais e Bahia. *Cerrado: Ecologia, Biodiversidade e Conservação* (org. Scariot A., Sousa-Silva J.C. and Felfili J.M.), 143-154. Brasília: Ministério do Meio Ambiente. [This discusses the richness and diversity of the Cerrado vegetation]

Gibbs P.E. (1990). Self-incompatibility in flowering plants: a neotropical perspective. *Revista Brasileira de Botânica* 13, 125-136. [An important review about self-incompatibility in neotropical taxa.]

Goldenberg R. and Shepherd G.J. (1998). Studies on the reproductive biology of Melastomataceae in Cerrado vegetation. *Plant Systematics and Evolution* 211, 13-29. [Reproductive events of the Melastomataceae growing in the Cerrado Biome.]

Gottsberger G. and Silberbauer-Gottsberger I. (2006). *Life in the Cerrado: a South American Tropical Seasonal Ecosystem*, Vol. II. Pollination and Seed Dispersal, 383 pp. Germany: Universität Ulm. [This book represents an important literature survey about the Cerrado Biome, including events and processes leading to reproduction and seed formation, focusing on plants, animals and the environment.]

Kageyama P. and Gandara F.B. (2000). Recuperação de áreas ciliares. *Matas Ciliares: Conservação e Recuperação* (ed. Rodrigues R.R. and Leitão Filho H.F.), 249-269. São Paulo: Editora da Universidade de

São Paulo. [A proposal for regeneration and conservation projects of the Brazilian riparian forests with information about the soil, water distribution, floristic patterns and evolution of the landscape, and factors that are conditioning the life in these environments.]

Labouriau L.G. (1983). *A Germinação das Sementes*, 174 pp. Organização dos Estados Americanos. Programa Regional de Desenvolvimento Científico e Tecnológico. Série de Biologia. Monografia 24. [Concepts and germination measurements are presented in this classical book about seeds, dormancy and dynamics of the germination process.]

Labouriau L.G. and Pacheco A.A. (1978). On the frequency of isothermal germination in seeds of *Dolichos biflorus* L. *Plant & Cell Physiology* 19, :507-512. [The thermobiological behavior of the seeds is discussed, based on the relative frequencies of germination as a function of time.]

Lima J.E.F.W. and Silva E.M. (2005). Estimativa da produção hídrica superficial do cerrado brasileiro. *Cerrado: Ecologia, Biodiversidade e Conservação* (org. Scariot A., Sousa-Silva J.C. and Felfili J.M.), 63-72. Brasília: Ministério do Meio Ambiente. [The dynamics of the hydrographical basins distributed in the Cerrado region and their influence in the Brazilian water distribution are discussed.]

Lorenzi H. (1992). *Árvores Brasileiras. Manual de Identificação e Cultivo de Plantas Arbóreas Nativas do Brasil*, Vol. I, 367 pp. Nova Odessa, SP: Editora Plantarum. [This is an attractive and practical field guide for tree species native to Brazilian ecosystems. General phenology information is also presented.]

Lorenzi H. (1998). *Árvores Brasileiras. Manual de Identificação e Cultivo de Plantas Arbóreas Nativas do Brasil*, Vol. II, 368 pp. Nova Odessa, SP: Editora Plantarum. [This is an attractive and practical field guide for tree species native to Brazilian ecosystems. General phenology information is also presented.]

Mendonça R., Felfili J.M., Walter B.M.T., Silva Júnior, M.C., Rezende, A.V., Filgueiras, T.S. and Nogueira, P.E.N. (1998). Flora vascular do cerrado. *Cerrado: Ambiente e Flora* (ed. Sano S.; Almeida S.), 287-556. Planaltina: Embrapa, CPAC. [This chapter presents a list of the cerrado species, including the phytophysionomies and habitat where they occur.]

Myers N., Mittermeier R.A., Mittermeier C.G., Fonseca G.A.B. and Kents J. (2000). Biodiversity Hotspots for Conservation Priorities. *Nature* 403, 853-858. [The principal threatened areas are mentioned in this paper.]

Oliveira P.E. (1998). Fenologia e biologia reprodutiva das espécies de cerrado. *Cerrado: Ambiente e Flora* (ed. Sano S.; Almeida S.), 169-192. Planaltina: Embrapa, CPAC. [The climatic seasonality of the Cerrado region acts on reproductive biology of some important species.]

Oliveira P.E.A.M. and Paula F.R. (2001). Fenologia e biologia reprodutiva de plantas de matas de galeria. *Cerrado: Caracterização e Recuperação de Matas de Galeria* (ed. Ribeiro J.F., Fonseca C.E.L. and Sousa-Silva J.C.), 303-332. Planaltina, DF: Embrapa Cerrados. [The phenology and reproductive biology of species occurring in gallery forests of the Cerrado region were studied and the results demonstrated by means of interesting figures.]

Pereira-Diniz S.G. and Ranal M.A. 2006. Germinable soil seed bank of a gallery forest in Brazilian Cerrado. *Plant Ecology* 183, 337-348. [This paper presents the size and the composition of the soil seed bank of the gallery forest of the Panga River, Uberlândia, Minas Gerais, Brazil, for the wet and dry seasons.]

Ranal M.A. (2003). Soil spore bank of ferns in a gallery Forest of the Ecological Station of Panga, Uberlândia — MG, Brazil. *American Fern Journal* 93, 1-19. [This paper presents the climatic diagram of Uberlândia, Minas Gerais, Brazil.]

Ranal M.A. and Santana D.G. (2004). Delineamento experimental. *Germinação: do Básico ao Aplicado* (ed. Ferreira A.G. and Borghetti F), 189-196. Porto Alegre: Artmed Editora. [The more common experimental designs that permit the study of the germination process are presented.]

Ranal M.A. and Santana D.G. (2006). How and why to measure the germination process? *Revista Brasileira de Botânica* 29, 1-11. [An important review about measurements of the germination process, their meaning, use, and limitations.]

Ribeiro, J.F. and Walter, B.M.T. (1998). Fitofisionomias do bioma cerrado. *Cerrado: Ambiente e Flora* (ed. Sano S.; Almeida S.), 89-166. Planaltina: Embrapa, CPAC. [The authors present a detailed

description of the several phytophysiognomies of the Cerrado Biome, with the vegetation profile and a key for their identification.]

Ribeiro J. F. and Walter B.M.T. (2001). As matas de galeria no contexto do bioma cerrado. *Cerrado: Caracterização e Recuperação de Matas de Galeria* (ed. Ribeiro J.F., Fonseca C.E.L. and Sousa-Silva J.C.), 29-47. Planaltina, DF: Embrapa Cerrados. [The gallery forests in the context of the Cerrado Biome are discussed and a good vegetation profile is presented with some photos.]

Rodrigues M.T. (2005). A biodiversidade dos Cerrados: conhecimento atual e perspectivas, com uma hipótese sobre o papel das matas galerias na troca faunística durante ciclos climáticos. *Cerrado: Ecologia, Biodiversidade e Conservação* (org. Scariot A., Sousa-Silva J.C.; Felfili J.M.), 237-246. Brasília: Ministério do Meio Ambiente. [Richness, endemism, speciation acting in the biodiversity of the Brazilian Cerrado are discussed by the author. The author also presents one hypothesis about the role of the gallery forests for the speciation during the climatic cycles of the region.]

Salomão A.N., Sousa-Silva J.C., Davide A.C., Gonzáles S., Torres R.A.A., Wetzel M.M.V.S., Firetti F. and Caldas L.S. (2003). *Germinação de Sementes e Produção de Mudanças de Plantas do Cerrado*, 96 pp. Brasília: Rede de Sementes do Cerrado. [This is a handbook containing procedures for laboratorists and plant nurserists and one important table with basic information about germination and stored conditions for several species of the Cerrado Biome.]

Santana D.G. and Ranal M.A. (2004). *Análise da Germinação: um Enfoque Estatístico*, 247 pp. Editora UnB, Brasília. [A guide for germination studies.]

Santana D.G. and Ranal M.A. (2004). Análise estatística, *Germinação: do Básico ao Aplicado* (ed. Ferreira A.G. and Borghetti F.), 197-208. Porto Alegre: Artmed Editora. [Some statistical tests used by seed researchers.]

Silva Júnior M.C. 2005. *100 Árvores do Cerrado: Guia de Campo*, 278pp. Brasília: Ed. Rede de Sementes do Cerrado. [This is a pocketbook representing a practical field guide with several photos of the principal organs that permit the correct identification of 100 important tree species of the Cerrado region.]

Biographical Sketches

Marli A. Ranal is a Biologist (1976) and obtained her Master Degree (1983) and Doctorate (1988) titles in Plant Biology at the Universidade Estadual Paulista Júlio de Mesquita Filho. Since 1986 she is a teacher of the Federal University of Uberlândia and since 1998 she has been occupying the last level of the Academic carrier as “Titular” Professor. She has experience in Plant Biology, with emphasis in Plant Physiology, especially germination. From 1980 to 1998 her principal attention was ferns, in relation to germination, development, and establishment. In 1991 her studies about seed germination and plant development started. Then, her attention was changed from fern spores to seed germination. Since 1996 she has been recovering the history of the principal techniques to measure the germination and emergence processes. Her efforts have stimulated an up to date in this area of knowledge. She is a member of the American Fern Society, Asociación Latinoamericana de Pteridología, Asociación Latinoamericana de Botánica, Brazilian Botanical Society, and São Paulo Botanical Society. She was a member of the Editorial Board of the *Acta Botanica Brasilica* and *Revista Brasileira de Botânica*.

Denise Garcia de Santana is graduated in Agronomic Engineering from Federal University of Lavras, where she also got the master’s degree in Technology and Production of Seeds in 1995. She received her doctorate in 2000 from “Escola Superior de Agricultura Luiz de Queiroz — ESALQ, University of São Paulo”. She is one of the authors of “Análise da Germinação: enfoque estatístico”, book published in 2004, in Portuguese, by the University of Brasília, a work result from seeds fusion analysis with the basic and experiments statistics. Since 2000, she is member of Brazil’s Botanic Society / Nucleus of Germination Specialists and member of Brazil’s Horticultura Society. She is a researcher for Forest Research Center, a governmental agency “Conselho Nacional de Desenvolvimento Científico e Tecnológico - CNPq” under the Science and Technology Ministry, designated to promote the scientific and technological research as well to graduate human resources for it’s application. Her main research lines comprise of planning and statistical analyses of seed germination and seedlings emergency of native species, specially the Savanna.

Ivan Schiavini is graduate in Biological Science (Universidade Federal do Rio de Janeiro-1980), Master

Degree in Ecology (Universidade de Brasília - 1983) and Doctorate in Ecology (Universidade Estadual de Campinas -1992). I am a Associated Professor of the Universidade Federal de Uberlândia (1985 -). I have a large experience in Ecology research, mainly in ecology of ecosystems, forest ecology in cerrado biome, and ecology of plant communities and populations.

UNESCO - EOLSS
SAMPLE CHAPTERS