

GEOMETRIC MORPHOMETRICS

Andrea Cardini

Dipartimento di Biologia, Università di Modena e Reggio Emilia, via Campi 213, 41100, Modena, Italy

Functional Morphology and Evolution Unit, Hull York Medical School, University of Hull, Cottingham Road, Hull, HU6 7RX, UK / University of York, Heslington, York YO10 5DD, UK

Centre for Forensic Science, The University of Western Australia, 35 Stirling Highway, Crawley WA 6009, Australia

Keywords: biology, coordinates, transformation grids, group differences, homology, image rendering, landmark, morphology, outline, principal component analysis, Procrustes, shape, size, statistics, superimposition, visualization.

Contents

1. Background
2. The most commonly used method in geometric morphometrics: how to obtain size and shape using Procrustes superimposition
3. Procrustes methods 'for' outlines and surfaces: sliding semi-landmarks
4. Present and future of GMM
5. Software and resources for learning and applying geometric morphometrics

Acknowledgements

Glossary

Bibliography

Biographical Sketch

Summary

The aim of this chapter is to provide a simple introduction to Geometric Morphometrics (GMM). GMM is the numerical study of the interaction of size and shape with covarying factors in biology. It represents the modern form of morphometrics, a discipline with a century long history, and it includes a variety of methods. GMM makes extensive use of the advances in computer technology and digital imaging, providing tools to analyze and collect data within a rigorous statistical framework. Thanks to the combination of analytical power and intuitive visualizations using computer graphics, GMM has rapidly emerged as one of the most widely applied disciplines in biology.

In this review, I will: 1) briefly summarize the history of morphometrics; 2) provide a rapid overview of the new methods; 3) describe and exemplify the analysis of anatomical landmark coordinates using Procrustes methods, the leading set of techniques in morphometrics. Specific topics, which may not be of interest for the general reader but could be of help to those who may want to learn and apply these methods, are discussed in a series of sections in Appendix 1.

1. Background

1.1. Size and Shape: What are they?

Morphometrics is the quantitative statistical description of biological variation in form. Form is composed of size and shape. Informally, size is a measure of the magnitude or scale of an object. It says something about how big or small something is. Different measures of size may be relevant to different studies and will often result in different assessments of relative size and shape among the same objects. A linear distance, such as the condylobasal distance often used to measure cranial length in mammals, might be an estimator of size. Several distances can be combined as a sum or average, and many other options (areas, volumes etc.) can provide valid alternatives depending on the study aims and the methodological framework. Once size has been defined, shape is all the geometric information which is left after removing differences in size and position (i.e., translation and rotation of the objects one relative to the other). This is an operation that our brain routinely carries out, as we readily recognize the shape of an object regardless whether it is big or small, to the right (or left) of its original position, rotated etc. (Figure 1).

shape independent of size, location and rotation

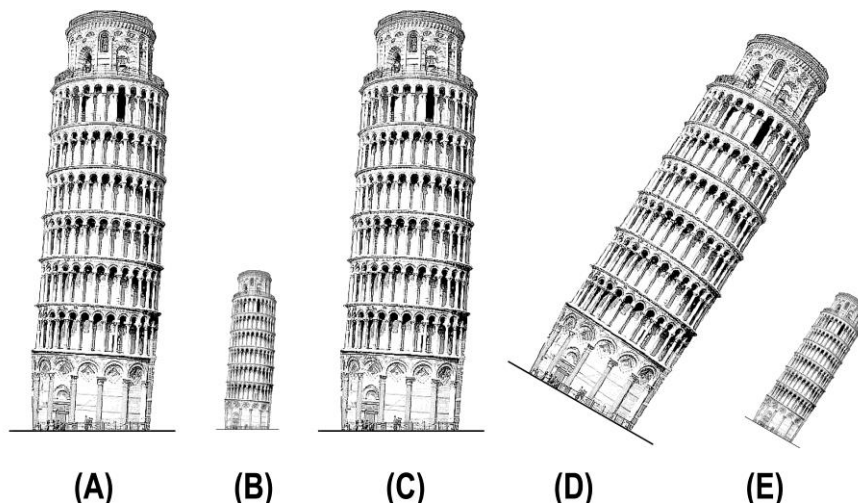


Figure 1. Size and shape: Pisa tower (A) recognizable shape despite differences in size and translation (B), translation only (C), rotation and translation (D) and rotation, translation and size (E). (Figure inspired by Chris Klingenberg's lecture in Turin, 2008; modified from a photo available at: http://en.wikipedia.org/wiki/File:Leaning_tower_of_pisa_2.jpg) ..

1.2. Morphometrics 'Using Calipers'

Traditionally a morphometric analysis was achieved by taking linear distance measurements between pairs of anatomical points (landmarks) using calipers and subjecting these measurements to univariate and multivariate statistical tests. For instance, one could measure the length of femora and tibiae in adult humans and

chimpanzees, assess differences and relate these to the different modes of locomotion of these two closely related species by contextualizing them biomechanically.

Geometric morphometrics extends the approaches of Traditional Morphometrics (TMM). This is achieved by using Cartesian coordinates, which are measurements of relative landmark locations (Figure 2), rather than using distances or angles derived from measurements based on those same landmarks. Since these relative positions represent the geometric 'essence' of shape variation, the anatomical points themselves are directly used in GMM to extract size and shape variables. These operations are performed in ways that preserve the geometry of the set (or configuration) of landmarks, and in principle allow derivation of traditional length and/or angle measurements from the landmarks.

Accuracy and statistical power are increased and results can be visualized with images and diagrams that are more intuitive than the tables of linear distances and coefficients of TMM. The differences between modern humans and chimpanzees captured by a small set of points on adult crania, for example, can be shown by rendering outlines and using transformation grids to help to visualize and interpret the main changes over the whole structure (Figure 3).

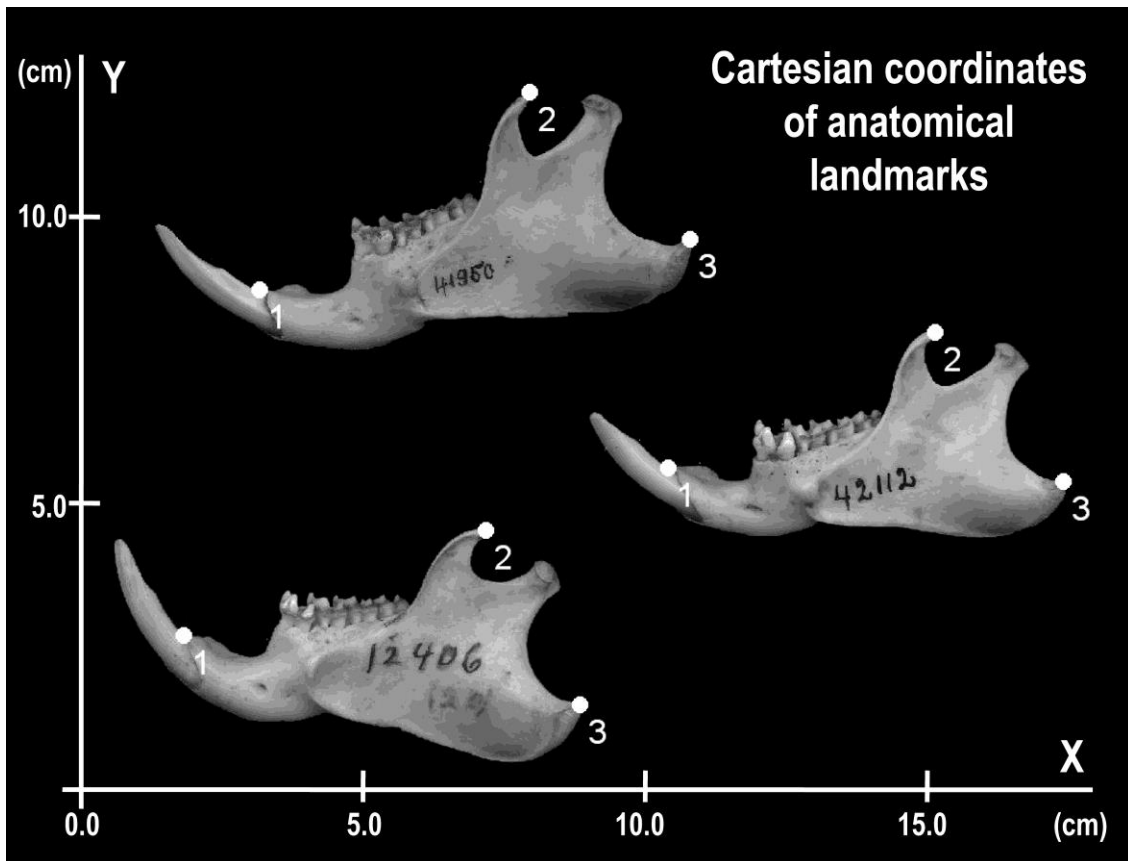


Figure 2. The form of three marmot hemimandibles is measured, in this example, using the Cartesian coordinates of three anatomical landmarks (1, tip of the alveolus; 2, tip of coronoid; 3, tip of angular process) digitized on their pictures

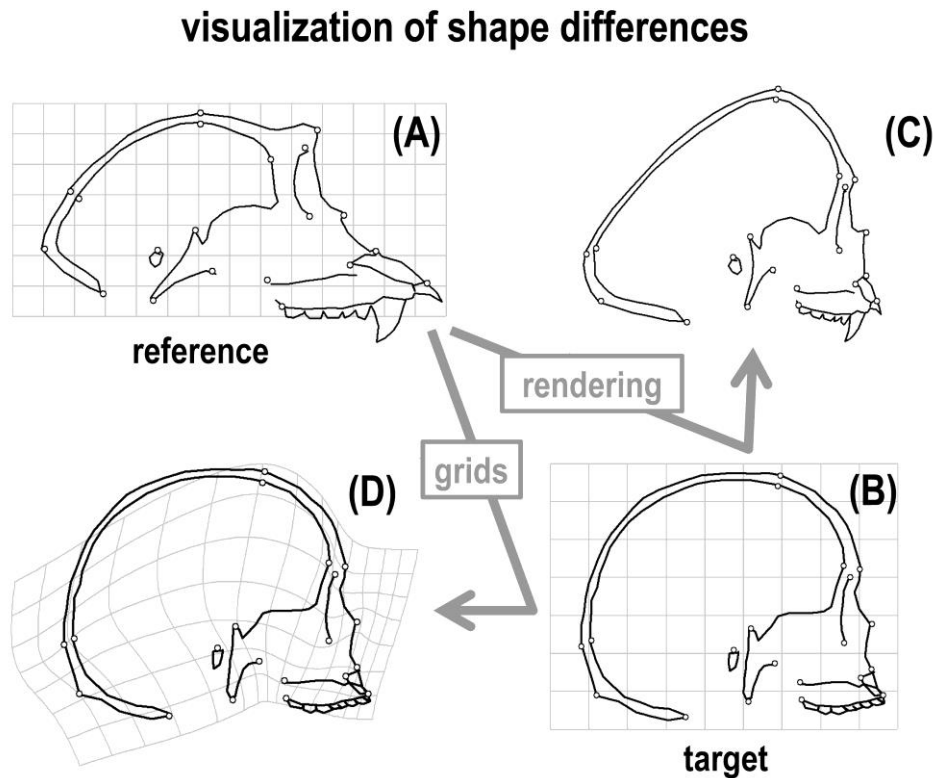


Figure 3. Visualization of shape differences. Cranial variation of chimpanzees and humans is captured by a configuration of 20 landmarks on the mid-plane. Differences are shown by warping the reference chimpanzee shape (A) into the human target (B) until the landmarks in the reference coincide with those in the target: the resulting changes in the contours (C) and the grid squares (D) help to see the main aspects of cranial variation in the comparison of these two species. “A way to think about... [contour rendering and transformation grids]... is as if one form were printed on a transparent stiff plastic sheet [together with a set of square grids] and then manipulated by bending so that its ‘shadow’ takes on the prescribed landmark positions of the second form” (p. 1168, Zelditch et al., 1992) (Data courtesy of D. Slice).

1.3. Calipers and Statistics: Few Words on the Early History of Morphometrics

The history of morphometrics is at least as long as that of modern science. At the end of the 19th century and the beginning of the 20th, scientists began to extensively measure phenotypic traits and summarize their findings using sample means and other parameters. For instance, a series of papers by Bumpus is considered one of the first evolutionary studies using morphometrics (Adams et al., 2004).

Bumpus(1898 [NB: additional references, including citations in the Appendix 1, are found after the main annotated bibliography and are provided to help beginners and those interested in more specialist aspects, that go beyond the interests of general readers) took several measurements on house sparrows collected after the birds had been stranded on a north American beach during a storm. Some of them survived and other died. Based on these data, he concluded that those most likely to survive had traits

closer to the sample average, which he saw as a kind of 'Darwinian optimum'. Half a century before Bumpus' work, and even before Darwin's "On the origin of the species" (1859), Morton (1839) compared human ethnic groups using estimates of cranial capacity. This was an "empirical approach, generating data by systematically measuring large numbers of actual specimens, [that] was groundbreaking" (p. 1, Lewis et al., 2011). Even earlier, in the 17th century, the German anatomist Elsholtz measured human variation thus marking the beginning of the field of anthropometry. In fact, human proportions have been studied and compared by artists for millennia (Reyment, 2010; Slice, 2005).

The analytical techniques to examine measurements were, however, developed only relatively recently and provided the bases for the mathematical description of form variation in samples. A prominent role in this advancement was played by the English school of biometricians led by Galton (1822-1911) and Pearson (1857-1936). They developed fundamental methods such as the correlation coefficient, linear regression and principal component analysis, all of which are still used by contemporary scientists.

Their contributions, together with those of other biostatisticians, such as Fisher (1890-1962) and Mahalanobis (1893-1972), led to the birth of the modern discipline of statistics and produced many of the methods (analysis of variance, discriminant analysis etc.), which soon became the standard analytical tools of morphometricians. In the same decades, Huxley and Teissier (1936) coined the term allometry to describe the differential rates of growth of anatomical regions as distinct from uniform changes in the size of the organism, and formalized this concept in a simple equation, whose parameters can be estimated by regression models (Gayon, 2000).

Multivariate morphometrics, later renamed TMM (Marcus, 1990), emerged from this scientific background in the second half of the 20th century. The name morphometrics appeared in the literature for the first time in the work by Blackith on the relationship between form and swarming behavior in locusts (1959).

It was used to indicate the application of statistical analysis to the study of morphological variation. In an extended presentation of his research, Blackith (1960) used a technique called linear discriminant analysis (DA) to combine measurements on locusts in a way that emphasizes group differences.

With this method he managed to find directions in the phenotypic space that best separate grasshopper morphs, demonstrating a connection between color polymorphism and external morphology.

In Appendix 1-A, additional readings are suggested that review the field of TMM and describe how the statistical tool-kit for the analysis of linear measurements became even more powerful thanks to the improvements of old methods, the development of new techniques and the design of innovative applications.

1.4. Three Main Limits of Traditional Morphometrics

TMM has offered and still offers a broad range of useful techniques to address a variety of scientific questions in biology and other fields. However, TMM has limitations that are difficult to overcome. These limitations provided the motivation to develop innovative techniques that eventually led to GMM:

- i) TMM data typically consist of size measurements, such as lengths. Using multivariate analysis, variables can be 'size-corrected' to extract information on shape. There is a range of methods in TMM to separate size and shape, but it is hard to say which, if any, works best. Separating size differences due to allometry from those due to differences in overall size (or scale) of the organisms is often challenging. Studies suggesting that one or other technique is more accurate or effective are unlikely to be generalizable. 'Size-corrections' also make interpretations less straightforward, as they are often based on standardizations or combinations of the original variables. The use of ratios is not ideal either. Ratios are apparently simple, but they are ambiguous, because the same ratio can be produced for very different shapes (Figure 4).

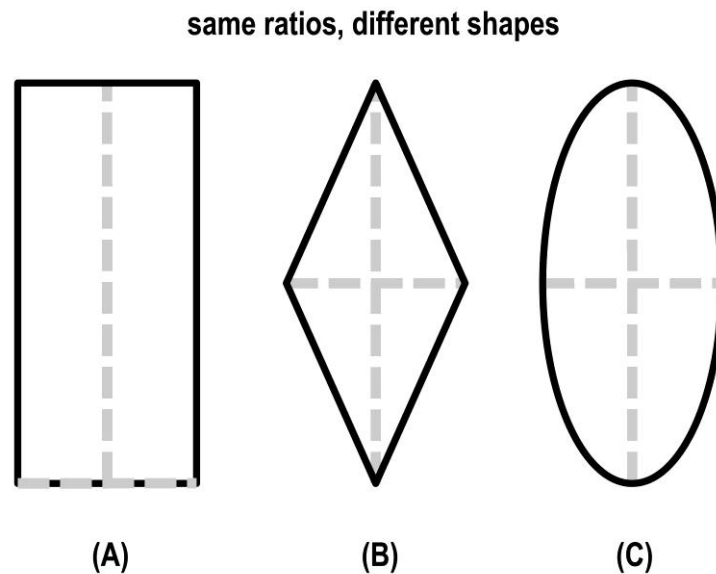


Figure 4. Same ratios different shapes: the ratio (dotted lines) between the maximum height and the maximum width of the rectangle (A), rhombus (B) and ellipse (C) is the same, but these three polygons have clearly different geometric shapes.

- ii) TMM uses measurements between points, but it does not preserve their spatial relationships. In Figure 4, there is no way to know, using just the height and width of the two polygons, where the straight line representing the width intersects with line measuring the height; the orientation of one line relative to the other is also missing. It is true that by adding more information one could reconstruct the spatial arrangement of a set of anatomical landmarks, but this rapidly becomes impractical for a large number of points. Using linear measurements between pairs of a total of q 2D landmarks (i.e., landmarks on pictures of a study structure, such as for instance

those in Figure 2), a minimum of $3+3 \times (q-3)$ distances are needed to completely reconstruct the relative positions of the landmarks (Corruccini, 2006). This means that for just 30 landmarks, one needs to take no less than 84 caliper measurements for each individual and for 100 landmarks that number raises to almost 300. If landmarks were reconstructed in 3D (i.e., as if they had been measured directly on a skull or another 3D structure), the formula would be $6+4 \times (q-4)$ (Slice, personal communication), and the number of linear measurements to take even bigger.

iii) TMM produces results, such as tables of measurements or coefficients (from regressions, DA etc.), that are not easily related to the original morphologies and therefore make the interpretation of findings more complicated.

1.5. From Traditional Morphometrics to Geometric Morphometrics

The history of the attempts to develop effective methods to describe morphological variation using geometric techniques is as long as that of TMM. Thompson (1917), one of the fathers of mathematical biology, showed in his seminal book “On growth and form” that grids (such as those in Figure 3) could be employed to compare shape differences in biological structures. A rigorous quantitative method for predicting how the grids bend, expand and contract in the transformation of one shape into another was not developed, however, until the end of the 1960s (Sneath, 1967) and had its successful mathematical formalization only in the second half of the 1980s (Bookstein, 1989).

superimposition changes the interpretation of differences

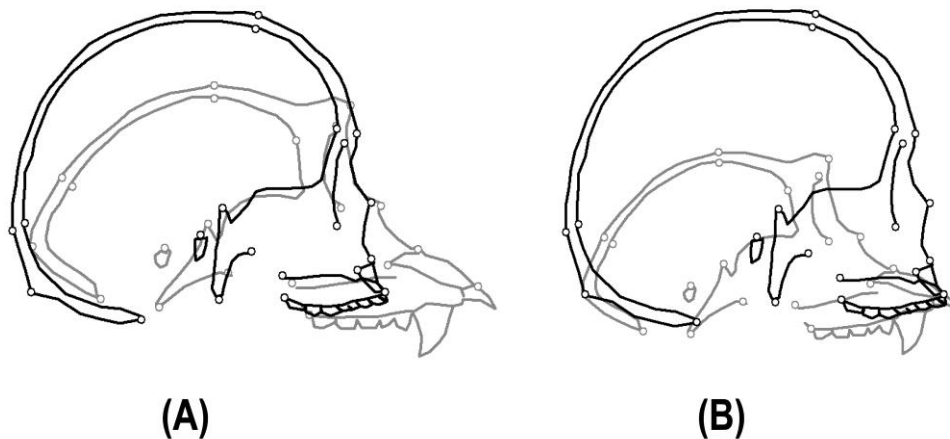


Figure 5. Chimpanzee (grey) and human (black) crania superimposed using different mathematical criteria: (A) Procrustes superimposition; (B) Bookstein baseline with inion and prosthion as the common baseline. (Data courtesy of D. Slice).

Superimposing structures as a way to measure and visualize differences (Figure 5) was also suggested more than a century ago. Despite their appeal, superimposition methods, which are also called registrations or alignments, have not been really adopted until

fairly recently. Their limited success was a consequence of the arbitrariness of the choice of the superimposition.

This crucially affects the outcome of the visualization and may lead to considerably different interpretations of shape changes. This is exemplified in Figure 5 using the same data as in Figure 3 to measure cranial differences between humans and chimpanzees: although both types of superimpositions (which are explained in the next paragraph) clearly indicate the extraordinary expansion of the braincase in humans, this aspect is over-emphasized in B compared to A, whereas facial prognathism in chimpanzees is more evident in A.

The principle behind the superimposition method used in Figure 5B dates back to the work of Pearson at the beginning of the 20th century. He superimposed human facial profiles on two points to emphasize shape variation. This technique became later known as Bookstein superimposition or Bookstein baseline, and results in Bookstein coordinates. It simply involves rescaling, rotating and translating specimens until the two baseline points overlap.

This superimposition implies that the length of the baseline is the standard measure of size in the analysis, as the coordinates are normalized via division by this length. Pearson applied the baseline superimposition in order to identify the mummified head of Oliver Cromwell by matching its landmarks to the available corpus of portraits and busts (Bookstein et al., 2004). Boas, the father of American anthropology and a contemporary of Pearson, tried a similar approach for comparing skull shapes, but he decided to minimize the sum of distances between all cranial points in a pair of specimens to align them (Cole, 1996).

Boas' original intuition was later picked up by other scientists (Sneath, 1967), who elaborated the method and studied the properties of the space of shapes it generates (see the series of papers by Kendall cited in Slice, 2005, and in particular Kendall, 1977). In the 1990s, the method was further developed and became known as generalized Procrustes analysis (GPA) or simply Procrustes superimposition (Rohlf and Slice, 1990). GPA is now the most popular superimposition model because of its desirable statistical properties (most importantly perhaps being the establishment of a generalized metric of shape distance, the Procrustes distance between specimens – see below).

However, in terms of the biological interpretations of differences, GPA is as arbitrary as other superimposition methods. This is why visualizations of superimposed shapes should be examined with the greatest caution or altogether avoided. A best known example of this problem is the so called 'Pinocchio effect' illustrated in Figure 6 (see also Appendix 1-B): although the only difference between Pinocchio before (A) and after lying (B) is the length of the nose (C), superimposed shapes (D) suggest otherwise; however, this apparent difference is purely an artifact of the superimposition used to separate size and shape.

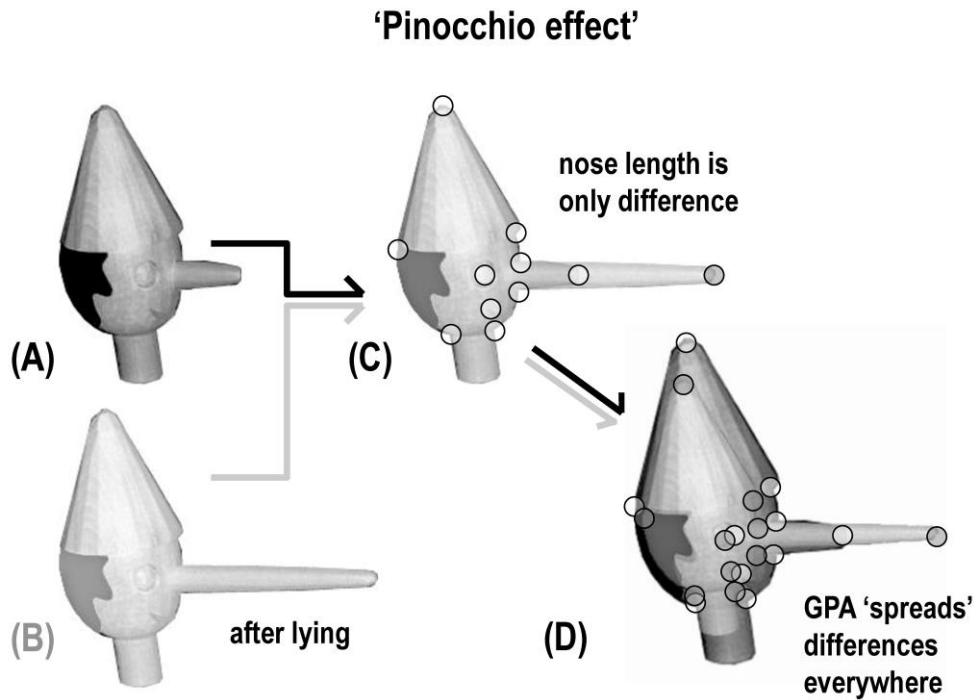


Figure 6. Pinocchio effect. Pinocchio before (A) and after (B) lying: the only difference is the nose length, captured by the dark grey landmark (C). However, after the Procrustes superimposition using the set of landmarks shown in (C), differences seem to occur all over the head. (Pictures modified from a photo available at <http://en.wikipedia.org/wiki/File:PinocchioFirenze.jpg>).

Superimposition methods rely on specific points, the landmarks, to describe the aspects of shape variation. For a meaningful comparison, landmarks must have a precise one to one correspondence. It is often said that they must be 'homologous'.

As for the whole landmark configuration itself, the kind of 'homology' of the landmarks depends on the scientific questions: "... in a study of bat and bird wings if one is interested in function, landmarks at wing tips and along the leading and trailing edges may be functionally equivalent; they might embody the question in being related to functionally relevant aspects of form.

However, these landmarks may lie on structures that are not equivalent in other ways; for a study of growth or evolution, alternative landmarks may be the most suited ones" (p. 89, Oxnard and O'Higgins, 2009). 'Homologous' landmarks, however, are often limited in number or may be missing altogether. The optic cup in the human eye is a small crater-like depression at the centre of the region where the optic nerve connects to the retina (Figure 7A).

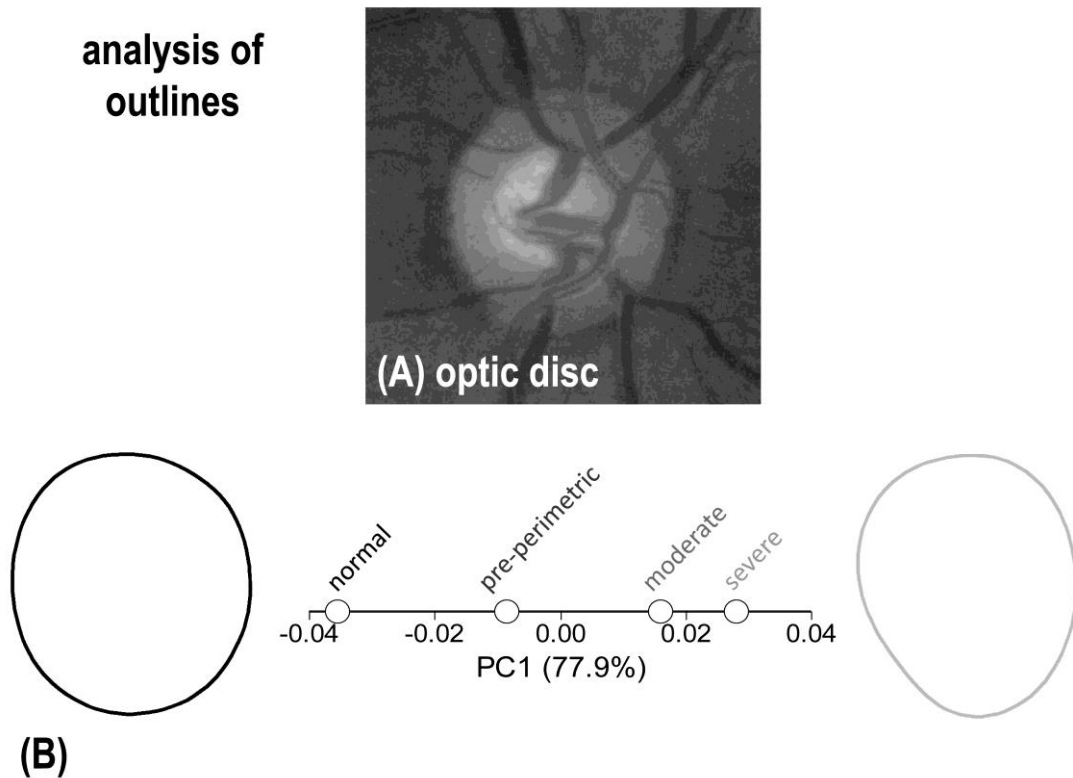


Figure 7. (A) Optic disc (modified from a photo available at <http://en.wikipedia.org/wiki/File:Retinography.jpg>). (B) Analysis of outlines of the optic disc using Elliptic Fourier Analysis. PCA of mean reconstructed shapes for groups of patients with different degree of severity of glaucoma (data courtesy of Paul Sanfilippo): the main axis of change (77.9% of total shape variance) perfectly aligns with the direction set by the severity of the disease (i.e., Normal / Pre-perimetric / Moderate / Severe) as assessed by AGIS score (Advanced Glaucoma Intervention Study - AGIS Investigators, 1994).

Mean reconstructed shapes for the opposite extreme of the range of variation (i.e., Normal *versus* Severe) are shown.

The cup is approximately circular and lacks well defined anatomical landmarks. In order to measure and compare anatomical structures such as the optic cup, a series of methods for the analysis of outlines was developed. Figure 7B shows the gradient of variation in the optic cup shape as a function of the degree of severity of glaucoma captured by the main axis of variation in its outlines.

-
-
-

TO ACCESS ALL THE 52 PAGES OF THIS CHAPTER,
Visit: <http://www.eolss.net/Eolss-sampleAllChapter.aspx>

Bibliography

- Adams, D. C., Rohlf, F. J., and Slice, D. E. (2004). Geometric morphometrics: ten years of progress following the “revolution.” *Italian Journal of Zoology*, 71(1), 5–16. [One of the best review articles on GMM]
- Bookstein, F. L. (2000). Morphometrics. In John Wiley and Sons, Ltd (Ed.), *Encyclopedia of Life Sciences*. Chichester, UK: John Wiley and Sons, Ltd. [A short but readable definition of morphometrics]
- Cardini, A., and Elton, S. (2007). Sample size and sampling error in geometric morphometric studies of size and shape. *Zoomorphology*, 126(2), 121–134. [A technical article showing the effect of sampling error on estimates of sample means, variation etc. in PGMM]
- Claude, J. (2008). *Morphometrics with R*. Springer Verlag. [An introduction to morphometrics using the statistical environment R]
- Klingenberg, C. P. (1998). Heterochrony and allometry: the analysis of evolutionary change in ontogeny. *Biological Reviews*, 73(1), 79-123. [An introduction to some general study topics in morphometrics and evolutionary developmental biology]
- Klingenberg, C. P. (2008). Novelty and “Homology-free” Morphometrics: What’s in a Name? *Evolutionary Biology*, 35(3), 186-190. [An important caveat about semi-landmarks and related methods]
- Marcus, L. F. (1990). Traditional morphometrics. *Proceedings of the Michigan morphometrics workshop* (Vol. 2, p. 77-122). [Possibly the best concise but complete overview on multivariate statistics in TMM]
- O’Higgins, P. (1997). Methodological issues in the description of forms. *Fourier descriptors and their applications in biology*, 74–105. [One of the first clear contributions stressing not only the limitations of outline methods, but also the difficulties of analyses of forms without clear landmarks]
- O’Higgins, P. (2000). The study of morphological variation in the hominid fossil record: biology, landmarks and geometry. *Journal of Anatomy*, 197(1), 103-120. [An introduction to GMM with a focus on anthropology and one of the clearest descriptions of issue of non-linearity of the Procrustes shape space]
- Oxnard, C., and O’Higgins, P. (2011). Biology Clearly Needs Morphometrics. Does Morphometrics Need Biology? *Biological Theory*, 4(1), 84-97. [Together with Klingenberg (2008), it is a fundamental reading to appreciate that scientific accuracy in morphometrics crucially depends on a clear understanding of what mathematical abstractions imply in terms of biology]
- Reyment, R. A. (2010). Morphometrics: An Historical Essay. In A. M. T. Elewa (Ed.), *Morphometrics for Nonmorphometricians* (Vol. 124, pp. 9-24). Berlin, Heidelberg: Springer Berlin Heidelberg. [A recent and interesting review on GMM by one of the founders of TMM]
- Slice, D. E. (2005). Modern Morphometrics. In Dennis E. Slice (Ed.), *Modern Morphometrics in Physical Anthropology* (pp. 1-45). New York: Kluwer Academic Publishers-Plenum Publishers. [A detailed review on GMM for those looking for more information on methods]
- Thompson, D. W. (1917). *On growth and form*. Cambridge Univ. Press, Cambridge.[The book that showed that geometry and mathematics applied to the study of morphology can lead to inspiration and insight in biology]
- Viscosi, V., and Cardini, Andrea. (2011). Leaf Morphology, Taxonomy and Geometric Morphometrics: A Simplified Protocol for Beginners. (C. Lalueza-Fox, Ed.) *PLoS ONE*, 6(10), e25630. [A simplified protocol for taxonomic comparisons with guidelines, example data and comments on many of the issues that are easily overlooked by beginners in PGMM]
- Zelditch, M., Swiderski, D. L., Sheets, D. H., and Fink, W. L. (2004). *Geometric morphometrics for biologists: a primer*. Academic Press. [Until now, the only introductory English textbook on PGMM for biologists: generally exemplar for its clarity and completeness, it is possibly the best 'place' to start learning PGMM]

Additional References (including those in the Appendix 1)

- Adams, D. C. (1999). Methods for shape analysis of landmark data from articulated structures. *Evolutionary Ecology Research*, 1(8), 959–970.
- Adams, Dean C, and Collyer, M. L. (2009). A general framework for the analysis of phenotypic trajectories in evolutionary studies. *Evolution*, 63(5), 1143-1154.
- Adams, D. C., and Rohlf, F. James. (2000). Ecological character displacement in *Plethodon*: Biomechanical differences found from a geometric morphometric study. *Proceedings of the National Academy of Sciences*, 97(8), 4106 -4111.
- Adams, Dean C., and Cerney, M. M. (2007). Quantifying biomechanical motion using Procrustes motion analysis. *Journal of Biomechanics*, 40(2), 437 - 444.
- Adams, D. C., Cardini, A., Monteiro, L. R., O’Higgins, P., & Rohlf, F. J. (2011). Morphometrics and phylogenetics: Principal components of shape from cranial modules are neither appropriate nor effective cladistic characters. *Journal of human evolution*, 60, 240–243.
- Anderson, M. J. (2001). Permutation tests for univariate or multivariate analysis of variance and regression. *Canadian Journal of Fisheries and Aquatic Sciences*, 58(3), 626-639
- Armitage, K. B. (2007). Evolution of sociality in marmots: It begins with hibernation. (Pages 356–67) In: *Rodent Societies: An Ecological and Evolutionary Perspective* (Wolff, J. O., and Sherman, P. W., Eds).. University of Chicago Press, Chicago.
- Armitage, K. B. (2010). Individual fitness, social behavior, and population dynamics of yellow-bellied marmots. (Pages 134-154) In: *The Ecology of Place* (Billick, I., and Price, M. V., Eds). University of Chicago Press, Chicago.
- Ashburner, J., and Friston, K. J. (2001). Why Voxel-Based Morphometry Should Be Used. *NeuroImage*, 14(6), 1238 - 1243.
- Awise, J. C. (2008). Colloquium Paper: Three ambitious (and rather unorthodox) assignments for the field of biodiversity genetics. *Proceedings of the National Academy of Sciences*, 105(Supplement 1), 11564-11570.
- Baylac, M., Villemant, C., and Simbolotti, G. (2003). Combining geometric morphometrics with pattern recognition for the investigation of species complexes. *Biological Journal of the Linnean Society*, 80(1), 89-98.
- Blackith, R. E. (1960). A Synthesis of Multivariate Techniques to Distinguish Patterns of Growth in Grasshoppers. *Biometrics*, 16(1), 28-40.
- Bookstein, F. L. (1989). Principal warps: thin-plate splines and the decomposition of deformations. *IEEE Transactions on Pattern Analysis and Machine Intelligence*, 11(6), 567–585.
- Bookstein, F. L. (1997a). Landmark methods for forms without landmarks: morphometrics of group differences in outline shape. *Medical Image Analysis*, 1(3), 225 - 243.
- Bookstein, F. L. (1997b). Shape and the Information in Medical Images: A Decade of the Morphometric Synthesis. *Computer Vision and Image Understanding*, 66(2), 97 - 118.
- Bookstein, F. L, Gunz, P., Mitteröcker, P., Prossinger, H., Schæfer, K., and Seidler, H. (2003). Cranial integration in *Homo*: singular warps analysis of the midsagittal plane in ontogeny and evolution. *Journal of Human Evolution*, 44(2), 167 - 187.
- Bookstein, F. L, Slice, D. E, Gunz, P., and Mitteroecker, P. (2004). Anthropology takes control of morphometrics. *Collegium antropologicum*, 28, 121–132.
- Boyer, D. M., Lipman, Y., St. Clair, E., Puente, J., Patel, B. A., Funkhouser, T., Jernvall, J., et al. (2011). Algorithms to automatically quantify the geometric similarity of anatomical surfaces. *Proceedings of the National Academy of Sciences*, 108(45), 18221 -18226.
- Bumpus, H. C. (1899). The elimination of the unfit as illustrated by the introduced sparrow, *Passer domesticus*. Biological Lectures, Wood Hole Marine Biological Station, 6, 209–226 - cited and criticized

- in: Manly, B. F. J., and Rayner, J. C. W. (1987). The comparison of sample covariance matrices using likelihood ratio tests. *Biometrika*, 74(4), 841-847.
- Cardini, Andrea. (2003). The Geometry of the Marmot (Rodentia: Sciuridae) Mandible: Phylogeny and Patterns of Morphological Evolution. *Systematic Biology*, 52(2), 186–205.
- Cardini, A., and Elton, S. (2008a). Variation in guenon skulls (II): sexual dimorphism. *Journal of Human Evolution*, 54(5), 638-647.
- Cardini, A., and Elton, S. (2008b). Does the skull carry a phylogenetic signal? Evolution and modularity in the guenons. *Biological Journal of the Linnean Society*, 93(4), 813-834.
- Cardini, A., and Elton, S. (2010). GeMBiD, a Geometric Morphometric Approach to the Study of Biological Diversity: An Example Study of the Red Colobus (*Procolobus* [Piliocolobus]) Species Complex. *International Journal of Primatology*, 32(2), 377-389.
- Cardini, A., Jansson, A., and Elton, S. (2007a). A geometric morphometric approach to the study of ecogeographical and clinal variation in vervet monkeys. *Journal of Biogeography*, 34(10), 1663-1678.
- CARDINI, A., THORINGTON JR, R. W., & POLLY, P. D. (2007). Evolutionary acceleration in the most endangered mammal of Canada: speciation and divergence in the Vancouver Island marmot (Rodentia, Sciuridae). *Journal of Evolutionary Biology*, 20(5), 1833–1846.
- Cardini, A., Nagorsen, D., O’Higgins, P., Polly, P. D., Thorington, R. W., and Tongiorgi, P. (2009). Detecting biological distinctiveness using geometric morphometrics: an example case from the Vancouver Island marmot. *Ethology Ecology and Evolution*, 21(3), 209–223.
- Cardini, A., Filho, J. A. F. D., Polly, P. D., and Elton, Sarah. (2010). Biogeographic Analysis Using Geometric Morphometrics: Clines in Skull Size and Shape in a Widespread African Arboreal Monkey. In A. M. T. Elewa (Ed.), *Morphometrics for Nonmorphometricians* (Vol. 124, pp. 191-217). Berlin, Heidelberg: Springer Berlin Heidelberg.
- Catalano, S. A., Goloboff, P. A., and Giannini, N. P. (2010). Phylogenetic morphometrics (I): the use of landmark data in a phylogenetic framework. *Cladistics*, 26(5), 539-549.
- Caumul, R., and Polly, P. D. (2005). Phylogenetic and environmental components of morphological variation: skull, mandible, and molar shape in marmots (*Marmota*, Rodentia). *Evolution*, 59(11), 2460-2472.
- Cobb, S. N., and O’Higgins, P. (2004). Hominins do not share a common postnatal facial ontogenetic shape trajectory. *Journal of Experimental Zoology Part B: Molecular and Developmental Evolution*, 302B(3), 302-321.
- Cole III, T. M. (1996). Historical note: Early anthropological contributions to “geometric morphometrics.” *American Journal of Physical Anthropology*, 101(2), 291-296.
- Corruccini, R. S. (2006) Review of: Modern Morphometrics in Physical Anthropology, Ed. Dennis Slice. *International Journal of Primatology*, 27:649-651.
- Corti, M., and Rohlf, F. J. (2001). Chromosomal speciation and phenotypic evolution in the house mouse. *Biological Journal of the Linnean Society*, 73(1), 99-112.
- Drake, A. G., and Klingenberg, C. P. (2008). The pace of morphological change: historical transformation of skull shape in St Bernard dogs. *Proceedings of the Royal Society B: Biological Sciences*, 275(1630), 71-76.
- Drake, A. G., and Klingenberg, C. P. (2010). Large - Scale Diversification of Skull Shape in Domestic Dogs: Disparity and Modularity. *The American Naturalist*, 175(3), 289-301.
- Dryden, I. L., and Mardia, K. V. (1998). *Statistical shape analysis* (Vol. 4). John Wiley and Sons New York.
- Dryden, I. L., Hirst, J. D., and Melville, J. L. (2007). Statistical Analysis of Unlabeled Point Sets: Comparing Molecules in Chemoinformatics. *Biometrics*, 63(1), 237-251.
- Elewa, A. M. T. (2010). *Morphometrics for Nonmorphometricians* (Vol. 124, pp. 9-24). Berlin, Heidelberg: Springer Berlin Heidelberg.

- Elton, S., Dunn, J., and Cardini, A. (2010). Size variation facilitates population divergence but does not explain it all: an example study from a widespread African monkey. *Biological Journal of the Linnean Society*, 101(4), 823-843.
- Fadda, C., and Corti, M. (2000). Three dimensional geometric morphometric study of the Ethiopian *Myomys-Stenocephalemys* complex (Murinae, Rodentia). *Hystrix, The Italian Journal of Mammalogy*, 11(1).
- Fadda, C., and Corti, M. (2001). Three - dimensional geometric morphometrics of *Arvicanthis*: implications for systematics and taxonomy. *Journal of Zoological Systematics and Evolutionary Research*, 39(4), 235-245.
- Frost, S. R., Marcus, Leslie F, Bookstein, Fred L, Reddy, David P, and Delson, E. (2003). Cranial allometry, phylogeography, and systematics of large - bodied papionins (primates: Cercopithecinae) inferred from geometric morphometric analysis of landmark data. *The Anatomical Record Part A: Discoveries in Molecular, Cellular, and Evolutionary Biology*, 275A(2), 1048-1072.
- Freckleton, R. P., and Jetz, W. (2009). Space versus phylogeny: disentangling phylogenetic and spatial signals in comparative data. *Proceedings of the Royal Society B: Biological Sciences*, 276(1654), 21 -30.
- Gayon, J. (2000). History of the Concept of Allometry. *American Zoologist*, 40(5), 748 -758.
- Gould, S. J. (2000). Of coiled oysters and big brains: how to rescue the terminology of heterochrony, now gone astray. *Evolution & Development*, 2(5), 241-248.
- Gunz, P., Mitteroecker, P., and Bookstein, Fred L. (2005). Semilandmarks in Three Dimensions. In D. E. Slice (Ed.), *Modern Morphometrics in Physical Anthropology* (pp. 73-98). New York: Kluwer Academic Publishers-Plenum Publishers.
- Gunz, P., Mitteroecker, P., Neubauer, S., Weber, G. W., and Bookstein, Fred L. (2009). Principles for the virtual reconstruction of hominin crania. *Journal of Human Evolution*, 57(1), 48 - 62.
- Haines, A. J., and Crampton, J. S. (2000). Improvements to the Method of Fourier Shape Analysis as Applied in Morphometric Studies. *Palaeontology*, 43(4), 765-783.
- Hair, J. F., Anderson, R. E., Tatham, R. L., and William, C. (1998). Black (1998), *Multivariate data analysis*. Upper Saddle River, NJ: Prentice Hall.
- Hajibabaei, M., Singer, G. A. C., Hebert, P. D. N., and Hickey, D. A. (2007). DNA barcoding: how it complements taxonomy, molecular phylogenetics and population genetics. *Trends in Genetics*, 23(4), 167 - 172
- Harvey, P. H., and Pagel, M. D. (1991). *The comparative method in evolutionary biology* Oxford University Press. New York.
- Hennessy, R. J., McLearie, S., Kinsella, A., and Waddington, J. L. (2005). Facial surface analysis by 3D laser scanning and geometric morphometrics in relation to sexual dimorphism in cerebral–craniofacial morphogenesis and cognitive function. *Journal of Anatomy*, 207(3), 283-295.
- Hennessy, R. J., and Stringer, C. B. (2002). Geometric morphometric study of the regional variation of modern human craniofacial form. *American Journal of Physical Anthropology*, 117(1), 37-48.
- Herler, J., Kerschbaumer, M., Mitteroecker, P., Postl, L., and Sturmbauer, C. (2010). Sexual dimorphism and population divergence in the Lake Tanganyika cichlid fish genus *Tropheus*. *Frontiers in Zoology*, 7(1), 4.
- Hoffmann, R.S., Koeppl, J.W., and Nadler, C.F. (1979). The relationships of the amphiberian marmots (Mammalia: Sciuridae). *Occasional Papers of the Museum of Natural History of the University of Kansas*, 83,1–56.
- Houle, D. (2009). Colloquium Paper: Numbering the hairs on our heads: The shared challenge and promise of phenomics. *Proceedings of the National Academy of Sciences*, 107(suppl_1), 1793-1799.
- Howell, D. C. (2002). *Statistical methods for psychology*. Wadsworth Pub Co.
- Huxley, J. S., and Teissier, G. (1936). Terminology of Relative Growth. *Nature*, 137(3471), 780-781.

- Kendall, D. G. (1977). The diffusion of shape. *Advances in Applied Probability*, 9, 428-430.
- Klingenberg, C. P. (2009). Morphometric integration and modularity in configurations of landmarks: tools for evaluating a priori hypotheses. *Evolution and Development*, 11(4), 405-421.
- Klingenberg, C. P., and Gidaszewski, N. A. (2010). Testing and Quantifying Phylogenetic Signals and Homoplasy in Morphometric Data. *Systematic Biology*, 59(3), 245 -261.
- Klingenberg, C. P., Barluenga, M., and Meyer, A. (2002). Shape Analysis of Symmetric Structures: Quantifying Variation among Individuals and Asymmetry. *Evolution*, 56(10), 1909-1920.
- Klingenberg, C. P., Leamy, L. J., and Cheverud, J. M. (2004). Integration and Modularity of Quantitative Trait Locus Effects on Geometric Shape in the Mouse Mandible. *Genetics*, 166(4), 1909 -1921.
- Klingenberg, C. P., and Monteiro, Leandro R. (2005). Distances and Directions in Multidimensional Shape Spaces: Implications for Morphometric Applications. *Systematic Biology*, 54(4), 678-688.
- Kovarovic, K., Aiello, L. C., Cardini, Andrea, and Lockwood, C. A. (2011). Discriminant function analyses in archaeology: are classification rates too good to be true? *Journal of Archaeological Science*, 38(11), 3006-3018.
- Linde, K., and Houle, D. (2009). Inferring the Nature of Allometry from Geometric Data. *Evolutionary Biology*, 36(3), 311-322.
- MacLeod, N. (1999). Generalizing and Extending the Eigenshape Method of Shape Space Visualization and Analysis. *Paleobiology*, 25(1), 107-138.
- MacLeod, N. (2001). Landmarks, localization, and the use of morphometrics in phylogenetic analysis. *Topics in geobiology*, 19, 197-234.
- MacLeod, N. (2002a). Geometric morphometrics and geological shape-classification systems. *Earth-Science Reviews*, 59(1-4), 27-47.
- MacLeod, N. (2002b). Phylogenetic signals in morphometric data. In N. MacLeod, N., & P. L. Forey (Eds.), *Morphology, shape and phylogeny* (pp. 100-138). London: Taylor & Francis; 2002.
- MacLeod, N., Benfield, M., and Culverhouse, P. (2010). Time to automate identification. *Nature*, 467(7312), 154-155.
- Manly, B. (1997). *Randomization, Bootstrap and Monte Carlo Methods in Biology*. Chapman and Hall, London, UK.
- Martínez - Abadías, N., Esparza, M., Sjøvold, T., González - José, R., Santos, M., Hernández, M., and Klingenberg, C. P. (n.d.). Pervasive genetic integration directs the evolution of human skull shape. *Evolution*.
- McPeck, M. A., Shen, L., Torrey, J. Z., & Farid, H. (2008). The Tempo and Mode of Three-Dimensional Morphological Evolution in Male Reproductive Structures. *The American Naturalist*, 171(5).
- Millien, V. (2006). Morphological Evolution Is Accelerated among Island Mammals. *PLoS Biology*, 4(10), e321.
- Mitteroecker, P., & Gunz, P. (2009). Advances in Geometric Morphometrics. *Evolutionary Biology*, 36(2), 235-247.
- Mitteroecker, P., Gunz, P., and Bookstein, Fred L. (2005). Heterochrony and geometric morphometrics: a comparison of cranial growth in *Pan paniscus* versus *Pan troglodytes*. *Evolution and Development*, 7(3), 244-258.
- Moore, D. S., and McCabe, G. P. (2005). Introduction to the Practice of Statistics. WH Freeman and Co. -Chapter on resampling statistics available for free at: <http://bcs.whfreeman.com/ips5e/>
- Morton S. G (1839) *Crania Americana; or, a comparative view of the skulls of various aboriginal nations of North and South America: to which is prefixed an essay on the varieties of the human species*. Philadelphia: J. Dobson - cited in: Lewis, J. E., DeGusta, D., Meyer, M. R., Monge, J. M., Mann, A. E., and Holloway, R. L. (2011). The Mismeasure of Science: Stephen Jay Gould versus Samuel George Morton on Skulls and Bias. *PLoS Biology*, 9(6).

- Nagorsen, D. W., and Cardini, A. (2009). Tempo and mode of evolutionary divergence in modern and Holocene Vancouver Island marmots (*Marmota vancouverensis*) (Mammalia, Rodentia). *Journal of Zoological Systematics and Evolutionary Research*, 47(3), 258-267.
- Neff, N. A., Marcus, L. F., and Meeting, A. S. of M. A. (1980). *A survey of multivariate methods for systematics*. American Museum of Natural History.
- O'Higgins, Paul, Cobb, S. N., Fitton, L. C., Gröning, F., Phillips, R., Liu, J., and Fagan, M. J. (2011). Combining geometric morphometrics and functional simulation: an emerging toolkit for virtual functional analyses. *Journal of Anatomy*, 218(1), 3-15.
- O'Higgins, P., Jones, N., Ghattaura, A., Hammond, P., Hutton, T., and Carr, M. (2002) Geometric morphometric approaches to the study of soft tissue growth and expression in the human face. *American Journal of Physical Anthropology*, Supplement, 34, 119.
- Oxnard, C. E. (1978). One Biologist's View of Morphometrics. *Annual Review of Ecology and Systematics*, 9, 219-241.
- Reed, S. (2010). Pushing DAISY. *Science*, 328(5986), 1628 -1629.
- Reddy, D. P., Harvati, K., and Kim, J. (2005). An Alternative Approach to Space Curve Analysis Using the Example of the Neanderthal Occipital Bun. In D. E. Slice (Ed.), *Modern Morphometrics in Physical Anthropology* (pp. 99-115). New York: Kluwer Academic Publishers-Plenum Publishers.
- Rohlf, F. J. (2002). Geometric morphometrics and phylogeny. *Systematics Association Special Volume*, 64, 175–193.
- Rohlf, F. J. (1990). Morphometrics. *Annual Review of Ecology and Systematics*, 21, 299–316.
- Rohlf, F. J. (1998). On Applications of Geometric Morphometrics to Studies of Ontogeny and Phylogeny. *Systematic Biology*, 47(1), 147-158.
- Rohlf, F. J. (2000). On the use of shape spaces to compare morphometric methods. *Hystrix, The Italian Journal of Mammalogy*, 11(1)
- Rohlf, F. J. (2006). A comment on phylogenetic correction. *Evolution*, 60(7), 1509-1515.
- Rohlf, F. J. (2000). On the use of shape spaces to compare morphometric methods. *Hystrix, The Italian Journal of Mammalogy*, 11(1).
- Rohlf, F. J., and Slice, D. (1990). Extensions of the Procrustes Method for the Optimal Superimposition of Landmarks. *Systematic Zoology*, 39(1), 40-59.
- Rohlf, F. James, and Corti, Marco. (2000). Use of Two-Block Partial Least-Squares to Study Covariation in Shape. *Systematic Biology*, 49(4), 740 -753.
- Rohlf, F. J., Loy, A., and Corti, Marco. (1996). Morphometric Analysis of Old World Talpidae (Mammalia, Insectivora) Using Partial-Warp Scores. *Systematic Biology*, 45(3), 344 -362.
- Sanfilippo, P. G., Cardini, Andrea, Sigal, I. A., Ruddle, J. B., Chua, B. E., Hewitt, A. W., and Mackey, D. A. (2010). A geometric morphometric assessment of the optic cup in glaucoma. *Experimental Eye Research*, 91(3), 405-414.
- Sampson, P. D., Bookstein, F. L., Sheehan, F. H., & Bolson, E. L. (1996). Eigenshape analysis of left ventricular outlines from contrast ventriculograms. NATO ASI series A Life Sciences, 284, 211–234. (Cited in: Sheets, H. D., Covino, K. M., Panasiwicz, J. M., & Morris, S. R. (2006). Comparison of geometric morphometric outline methods in the discrimination of age-related differences in feather shape. *Frontiers in Zoology*, 3(1), 15).
- Savriama, Y., and Klingenberg, C. (2011). Beyond bilateral symmetry: geometric morphometric methods for any type of symmetry. *BMC Evolutionary Biology*, 11(1), 280.
- Schaefer, K., Lauc, T., Mitteroecker, P., Gunz, P., and Bookstein, Fred L. (2006). Dental Arch Asymmetry in an Isolated Adriatic Community. *American Journal of Physical Anthropology*, 129(1), 132-142.

Seetah, T. K., Cardini, Andrea, and Miracle, P. T. (2012). Can morphospace shed light on cave bear spatial-temporal variation? Population dynamics of *Ursus spelaeus* from Romualdova pećina and Vindija, (Croatia). *Journal of Archaeological Science*, 39(2), 500-510.

Siegel, A. F., and Benson, R. H. (1982). A Robust Comparison of Biological Shapes. *Biometrics*, 38(2), 341-350.

Sneath, P. H. A. (1967). Trend surface analysis of transformation grids. *Journal of Zoology*, 151(1), 65-122.

Sneath, P. H. A., and Sokal, R. R. (1973). *Numerical taxonomy*. San Francisco: W.H. Freeman.

Stayton, C. T. (2006). Testing hypotheses of convergence with multivariate data: morphological and functional convergence among herbivorous lizards. *Evolution*, 60(4), 824-841.

Theobald, D. L., and Wuttke, D. S. (2006). Empirical Bayes hierarchical models for regularizing maximum likelihood estimation in the matrix Gaussian Procrustes problem. *Proceedings of the National Academy of Sciences*, 103(49), 18521 -18527.

Thorpe, B. R. S. (1976). Biometric analysis of geographic variation and racial affinities. *Biological Reviews*, 51(4), 407-452.

Voss, R. S., Marcus, Leslie F., and P., P. E. (1990). Morphological Evolution in Muroid Rodents I. Conservative Patterns of Craniometric Covariance and Their Ontogenetic Basis in the Neotropical Genus *Zygodontomys*. *Evolution*, 44(6), 1568-1587.

Wallace, R. G. (2002). The shape of space: applying geometric morphometrics to geographic data. *Environment and Planning A*, 34(1), 119-144.

Zelditch, M. L., Bookstein, F. L., & Lundrigan, B. L. (1992). Ontogeny of Integrated Skull Growth in the Cotton Rat *Sigmodon fulviventer*. *Evolution*, 46(4), 1164-1180.

Zelditch, M. L., Sheets, H. D., & Fink, W. L. (2003). The ontogenetic dynamics of shape disparity. *Paleobiology*, 29(1), 139 -156.

Biographical Sketch

Andrea Cardini is a biologist and researcher at the University of Modena and Reggio Emilia, Honorary Fellow of the Hull York Medical School, UK, and Adjunct Associate Professor at the Centre for Forensic Science of The University of Western Australia. His main research interest is the study of taxonomy and group differences using computerized tools and statistical shape analysis with applications ranging from medicine and forensics to conservation and evolutionary biology.